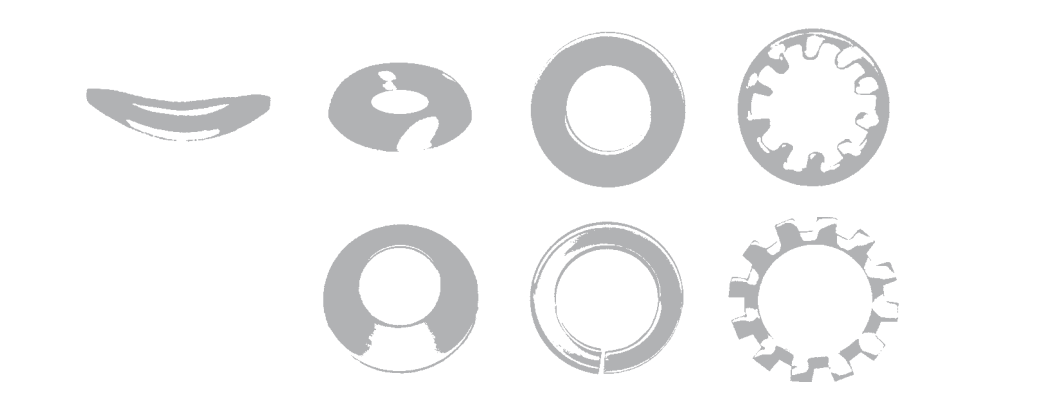
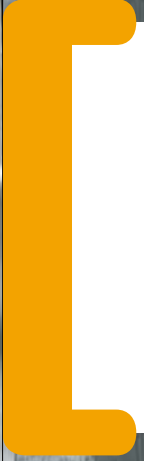




**S3-WASHER PRODUCTS**



**FLAT ROUND WASHERS - JG STANDARD**

		METRIC			METRIC	
GRADE		304/A2			316/A4	
SIZE	O.D	Thickness	Part No.	PKT Qty	Part No.	PKT Qty
	M3	7.0	0.5	3624	•	
M4	9.0	0.8	3625	•		
M5	10.0	0.8	3627	•		
M6	12.5	1.2	3628	•	4613	•
M8	17.0	1.2	3629	•	4615	•
M10	21.0	1.2	3630	•	4618	•
M12	24.0	1.5	3632	•	4620	•
M14	28.0	1.5	19891	•	7544	100
M16	30.0	1.5	3636	•	4624	100
M20	37.0	2.0	3637	100	4625	100
M22	39.0	2.5	13698	50		
M24	44.0	3.0	3638	50	4636	50
M27	50.0	3.0			4639	25
M30	56.0	3.0	4372	20	4642	20
M33	60.0	3.0			4678	20
M36	66.0	5.0			4680	10
M39	72.0	6.0			37924	10
M48	92.0	5.0			4682	10

**FLAT ROUND WASHERS - DIN 125A**

		METRIC			METRIC	
GRADE		304/A2			316/A4	
SIZE	O.D	Thickness	Part No.	PKT Qty	Part No.	PKT Qty
	M2	5.0	0.3			5277
M2.5	6.0	0.5			5994	•
M3	7.0	0.5			4687	•
M3.5	8.0	0.5			14879	•
M4	9.0	0.8			4689	•
M5	10.0	1.0	19875	•	4693	•
M6	12.5	1.6	19876	•	4695	•
M8	17.0	1.6	19877	•	4696	•
M10	21.0	2.0	19878	•	4697	100
M12	24.0	2.5	19879	100	4698	100
M14	28.0	2.5			30439	100
M16	30.0	3.0	19654	100	4699	100
M18	34.0	3.0			33948	100
M20	37.0	3.0	30154	100	4700	100
M22	39.0	3.0			30440	100
M24	44.0	4.0			4701	50
M39	72.0	6.0			37924	10
M42	78.0	7.0			38139	10
M48	72.0	8.0			38146	10

• PLEASE REFER TO BOOKLET AT BACK OF THE CATALOGUE FOR PACK QUANTITY.

**FLAT ROUND WASHERS - JG STANDARD**

SIZE

		IMPERIAL			IMPERIAL		
GRADE		304/A2			316/A4		
	O.D	Thickness	Part No.	PKT Qty	Part No.	PKT Qty	
	1/8	5/16	1126	•			
	1/8	3/8	1151	•			
	5/32	3/8	1137	•			
	5/32	7/16	30022	•			
	3/16	7/16	1140	•	2762	•	
	3/16	1/2	1152	•	2782	•	
	3/16	3/4	1153	•	16135	•	
	3/16	7/8	33836	•	30391	400	
	3/16	1	16811	•	19286	400	
	3/16	1.1/4	16269	300	16900	300	
	1/4	1/2	6426	•	16822	•	
	1/4	9/16	1158	•	13888	•	
	1/4	5/8	1142	•	2766	•	
	1/4	3/4	1154	•	2783	•	
	1/4	7/8			30392	100	
	1/4	1	1155	•	19287	100	
	1/4	1.1/4	16134	•	16136	100	
	5/16	5/8	1159	•	2784	•	
	5/16	3/4	1143	•	2767	•	
	5/16	1	1156	•	14989	100	
	5/16	1.1/4	16137	100	13889	100	
	3/8	3/4	1160	•	2785	•	
	3/8	7/8			30393	100	
	3/8	1	1144	•	2769	100	
	3/8	1.1/4	16138	100	16268	100	
	3/8	1.1/2	1157	100	16214	100	
	3/8	2			30373	50	
	7/16	1.1/8			2792	100	
	1/2	1	1161	•	2787	100	
	1/2	1.1/4	1145	100	2771	100	
	1/2	2	16810	50	30219	50	
	9/16	1.1/4			7543	100	
	5/8	1.1/4	1162	100	2788	100	
	5/8	1.1/2	1146	100	2772	100	
	3/4	1.1/2	1163	100	2789	100	
	3/4	1.7/8	1148	100	2773	100	
	7/8	1.5/8	13885	50			
	7/8	1.5/8			13891	50	
	7/8	2	1149	50	2776	50	
	1	1.7/8	13886	50			
	1	1.7/8			13892	50	
	1	2	1165	50			
	1	2.1/2	1150	50	2779	25	
	1.1/8	2.1/2			2793	20	
	1.1/4	2.3/4			2794	20	
	1.1/2	3.1/4			2796	10	
	2	3.3/4			2800	10	

• PLEASE REFER TO BOOKLET AT BACK OF THE CATALOGUE FOR PACK QUANTITY.

**FLAT ROUND WASHERS - DIN 9021 (MUDGUARD WASHERS)**

		METRIC			METRIC		
GRADE		304/A2			316/A4		
SIZE	O.D	Thickness	Part No.	PKT Qty	Part No.	PKT Qty	
	M5	15.0	1.2	19881	•	33510	•
	M6	18.0	1.6	19882	•	19889	•
	M8	24.0	2.0	19883	•	33511	300
	M10	30.0	2.5	19884	100		
	M12	37.0	3.0	19885	100	19890	100
	M16	50.0	3.0	19886	50		
	M20	60.0	4.0	19887	50		

**FLAT ROUND WASHERS - DIN 433**

		METRIC			
GRADE		304/A2			
SIZE	O.D	Thickness	Part No.	PKT Qty	
	M2.5	5.0	0.3	30333	400
	M3	6.0	0.5	30246	•

**NEW ZEALAND PRODUCT RANGE • AUSTRALIA - POA**

**SQUARE FLAT WASHER**

		304/A2			316/A4		
SIZE	Width	Thickness	Part No.	PKT Qty	Part No.	PKT Qty	
	M10	50x50	3.0			90121	50
	M12	50x50	3.0	38319	50	90123	50
	M16	50x50	3.0			90125	25
	M20	50x50	4.0			90126	50

IMPERIAL FLAT WASHERS		
IMPERIAL	METRIC	
GAUGE	MIN.	MAX.
10g	2.87mm	3.76mm
12g	2.37mm	3.05mm
14g	1.75mm	2.26mm
16g	1.34mm	1.75mm
18g	1.10mm	1.34mm
20g	0.84mm	1.20mm
22g	0.63mm	0.90mm

• PLEASE REFER TO BOOKLET AT BACK OF THE CATALOGUE FOR PACK QUANTITY.

**SPRING WASHERS SINGLE COIL - DIN 127B**

SIZE

				METRIC		METRIC	
GRADE				304/A2		316/A4	
	O.D	Thickness	Width	Part No.	PKT Qty	Part No.	PKT Qty
M2	4.5	0.5	0.9	10574	•	14162	•
M2.5	5.1	0.6	1.0	5381	•	16656	•
M3	6.2	0.8	1.3	7066	•	4703	•
M4	7.6	0.9	1.5	6119	•	4705	•
M5	9.2	1.2	1.8	3546	•	4707	•
M6	11.8	1.6	2.5	3547	•	4709	•
M8	14.8	2.0	3.0	3548	•	4710	•
M10	18.1	2.2	3.5	3549	•	4712	•
M12	21.1	2.5	4.0	3550	•	4714	•
M14	24.1	3.0	4.5			6851	100
M16	27.1	3.5	5.0	3551	100	4715	100
M18	29.4	3.5	5.0			31074	100
M20	33.6	4.0	6.0	3552	100	4716	100
M24	40.0	5.0	7.0			4718	50
M27	43.0	5.0	7.0			16536	25
M30	48.2	6.0	8.0			4719	25
M36	58.2	6.0	10.0			7150	10

**SPRING WASHERS SINGLE COIL - (MEDIUM SECTION) - ANSI B18.21.1**

SIZE

				METRIC		METRIC	
GRADE				304/A2		316/A4	
	O.D	Thickness	Width	Part No.	PKT Qty	Part No.	PKT Qty
2G	0.172	0.020	0.035	4563	•		
4G	0.209	0.025	0.040	5261	•		
3/32	0.195	0.025	0.040	2802	•		
1/8-5G	0.236	0.031	0.047	6868	•		
1/8-6G	0.250	0.031	0.047	14582	•	2804	•
5/32-8G	0.293	0.040	0.055	5059	•	2805	•
3/16-10G	0.334	0.047	0.620	1447	•	2806	•
1/4	0.489	0.062	0.109	1449	•	2807	•
5/16	0.586	0.078	0.125	1451	•	2808	•
3/8	0.683	0.094	0.141	1453	•	2809	•
7/16	0.779	0.109	0.156			2810	100
1/2	0.873	0.125	0.171	1455	•	2811	300
9/16	0.971	0.141	0.188	19779	100	15264	100
5/8	1.079	0.156	0.203	1458	200	2812	200
3/4	1.271	0.188	0.234	1460	100	2814	100
7/8	1.464	0.219	0.266	19780	50	2815	50
1	0.166	0.250	0.297	19781	50	2816	50
1.1/8	1.853	0.281	0.328			2818	25
1.1/4	2.045	0.312	0.359			2819	25
1.1/2						15258	10

• PLEASE REFER TO BOOKLET AT BACK OF THE CATALOGUE FOR PACK QUANTITY.



**BELLEVILLE WASHERS**

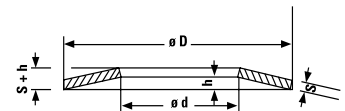
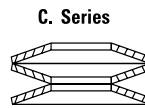
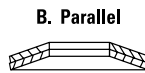
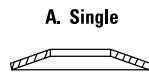
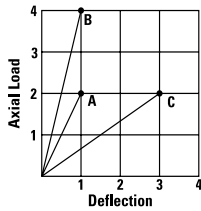
**METRIC**

**GRADE**

**304/A2**

SIZE

	Compressed to 0.75h		d	D	S	h	S+h	Part No.	PKT Qty
	Axial Load	0.75h mm							
M4	18kg	0.15	4.2	8.0	0.40	0.20	0.60	33544	200
M5	28kg	0.19	5.2	10.0	0.50	0.25	0.75	16687	100
M6	60kg	0.22	6.2	12.5	0.70	0.30	1.00	3540	100
M8	93kg	0.26	8.2	16.0	0.90	0.35	1.25	3541	100
M10	140kg	0.34	10.2	20.0	1.10	0.45	1.55	3542	100
M12	268kg	0.41	12.2	25.0	1.50	0.55	2.05	3543	100
M16	356kg	0.52	16.3	31.5	1.75	0.70	1.45	3544	100
M20	597kg	0.67	20.4	40.0	2.25	0.90	3.15	3545	100



**CUP WASHERS**

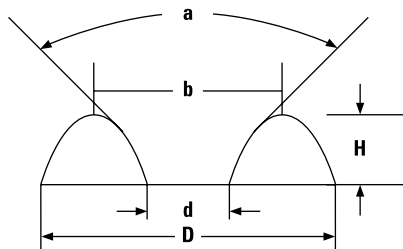
**IMPERIAL**

**GRADE**

**304/A2**

SIZE

	Part No.	PKT Qty
6G	1739	•
8G	1740	•
10G	1741	•
12G	1742	400
14G	5364	400



**DIMENSIONS IN MM**

SIZE	d	D	b	H	MAT. THICK.
NO.6 (3mm)	4.0	11.3	8.0	2.3	0.4
NO.8 (4mm)	4.8	13.7	10.0	2.5	0.4
NO.10 (5mm)	5.7	15.0	12.0	3.3	0.4
NO.12	6.1	17.6	12.5	3.8	0.4
NO.14 (6mm)	7.4	20.0	13.5	3.9	0.4

'a' = 90°

● PLEASE REFER TO BOOKLET AT BACK OF THE CATALOGUE FOR PACK QUANTITY.

**INTERNAL TOOTH LOCK WASHERS - DIN 6797 - TYPE J**

**METRIC**

**GRADE** 304/A2

SIZE

	O.D	Thickness	No. of Teeth	Part No.	PKT Qty
M2.5	5.5	0.4	6	16655	500
M3	6.0	0.4	6	14974	•
M4	8.0	0.5	8	14975	•
M5	10.0	0.6	8	14976	•
M6	11.0	0.7	8	14977	•
M8	15.0	0.8	8	14978	•
M10	18.0	0.9	9	14979	200
M12	20.5	1.0	10	14980	•
M16	26.0	1.2	12	5230	100
M20	33.0	1.4	12	19587	100



**EXTERNAL TOOTH LOCK WASHERS - DIN 6797 - TYPE A**

**METRIC**

**GRADE** 304/A2

SIZE

	O.D	Thickness	No. of Teeth	Part No.	PKT Qty
M3	6.0	0.4	6	14981	•
M4	8.0	0.5	8	14982	•
M5	10.0	0.6	8	14983	•
M6	11.0	0.7	8	14984	•
M8	15.0	0.8	8	14985	•
M10	18.0	0.9	9	14986	400
M12	20.5	1.0	10	14987	•
M16	26.0	1.2	12	6552	100



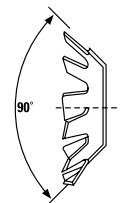
**COUNTERSUNK TOOTH LOCK WASHERS**

**METRIC**

**GRADE** 304/A2

SIZE

	O.D	Thickness	No. of Teeth	Part No.	PKT Qty
M3	6.0	0.4	8	31044	600
M4	8.0	0.4	8	31045	400
M5	10.0	0.5	9	31046	•
M6	12.0	0.5	10	31047	300
M8	16.0	0.6	12	31048	200



• PLEASE REFER TO BOOKLET AT BACK OF THE CATALOGUE FOR PACK QUANTITY.

**EXTERNAL SERRATED TOOTH LOCK WASHERS - DIN 6798 TYPE A**



SIZE

				METRIC		METRIC	
GRADE				304/A2		316/A4	
	O.D	Thickness	No. of Teeth	Part No.	PKT Qty	Part No.	PKT Qty
M4	8.0	0.5	11	31354	•		
M5	10.0	0.6	11			30183	•
M6	11.0	0.7	12	13728	•	19392	800
M8	15.0	0.8	14			16817	200
M10	18.0	0.9	16	13729	200	19393	200
M12	20.5	1.0	16			19394	100
M16	26.0	1.2	18			30206	100

**INTERNAL SERRATED TOOTH LOCK WASHERS - DIN 6798 - TYPE J**



SIZE

METRIC					
GRADE					
304/A2					
	O.D	Thickness	No. of Teeth	Part No.	PKT Qty
M5	10.0	0.6	8	13724	•

**CRINKLE, CURVED AND WAVE WASHERS**



SIZE

TYPE	CRINKLE (BS4463)		CURVED (DIN 137A)		WAVE (DIN 137B)	
GRADE	304/A2		304/A2		304/A2	
	Part No.	PKT Qty	Part No.	PKT Qty	Part No.	PKT Qty
M2	14631	•				
M2.5	9558	•				
M3	9559	•	15378	•	15375	•
M4	9560	•	15379	•	7145	•
M5	9561	•	15380	•	15376	•
M6	9562	•	15381	•	15377	•
M8	31247	100			16170	•
M10	19936	100				

• PLEASE REFER TO BOOKLET AT BACK OF THE CATALOGUE FOR PACK QUANTITY.